



We build Industry-leading homes to suit your lifestyle.

AMERICAN MODULAR

ASHEVILLE



Offers exceptional space utilization, a bright, open kitchen, and plenty of flexible uses of space.

Quality, modern, and energy-efficient homes.

Features rear-facing master bedroom, living room and dining area, a luxurious master bathroom, and two spacious bedrooms.

HOME FEATURES:



3 Bedroom



2.5 Bath



1,911 Sq Ft



Optional Garage

Upgrade Options:

Roof mounted solar array - granite counter tops - tile flooring - kitchen backsplash - heat pumps - fire place - garage packages and more!


We offer custom modular home builds led by an experienced team of engineers and builders crafting your vision into reality.


Our homes meet or exceed current industry standards, so you can build with confidence.


We offer customization, clean finishes, beautiful flooring, carpet, fast turn-around and move-in timelines.

Come and experience the American Modular difference!

LET'S CONNECT:

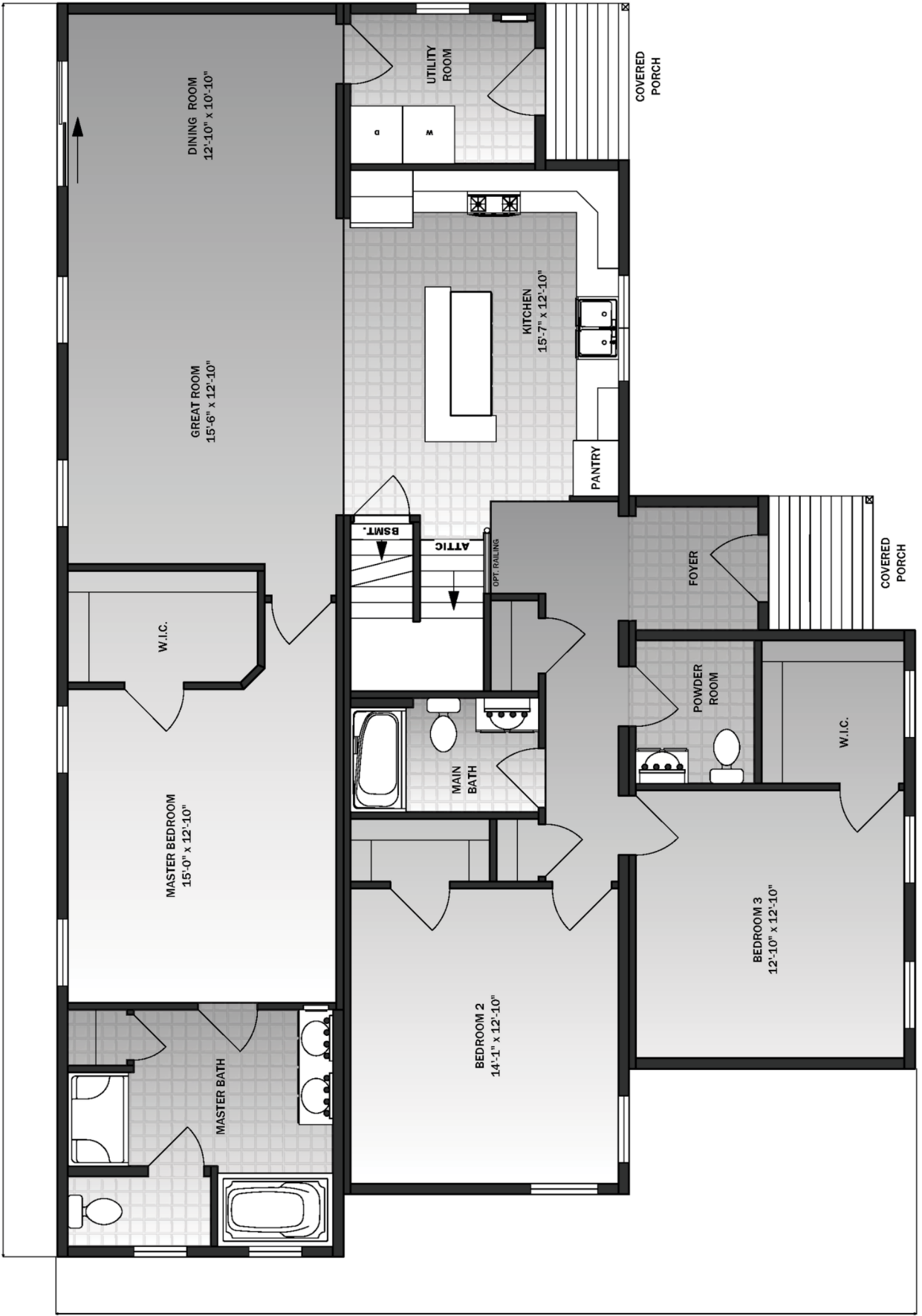
 (207) 572-3258

 sales@americanmodular.me

 www.americanmodular.me

 45 Portland Rd. Gray, ME 04039

60'-0"



41'-2"