



AMERICAN MODULAR

We build Industry-leading homes to suit your lifestyle.

ASTORIA II



Spacious kitchen and both formal and informal dining areas make this plan great for entertaining.

Quality, modern, and energy-efficient homes.

Also capable of accommodating an attic or site-finished third-floor living space, accessed by walk-up stairs.

HOME FEATURES:



3 Bedroom



2.5 Bath



2,194 Sq Ft



Optional Garage

Upgrade Options:

Roof mounted solar array - granite counter tops - tile flooring - kitchen backsplash - heat pumps - fire place - garage packages and more!


We offer custom modular home builds led by an experienced team of engineers and builders crafting your vision into reality.


Our homes meet or exceed current industry standards, so you can build with confidence.


We offer customization, clean finishes, beautiful flooring, carpet, fast turn-around and move-in timelines.


Come and experience the American Modular difference!

LET'S CONNECT:

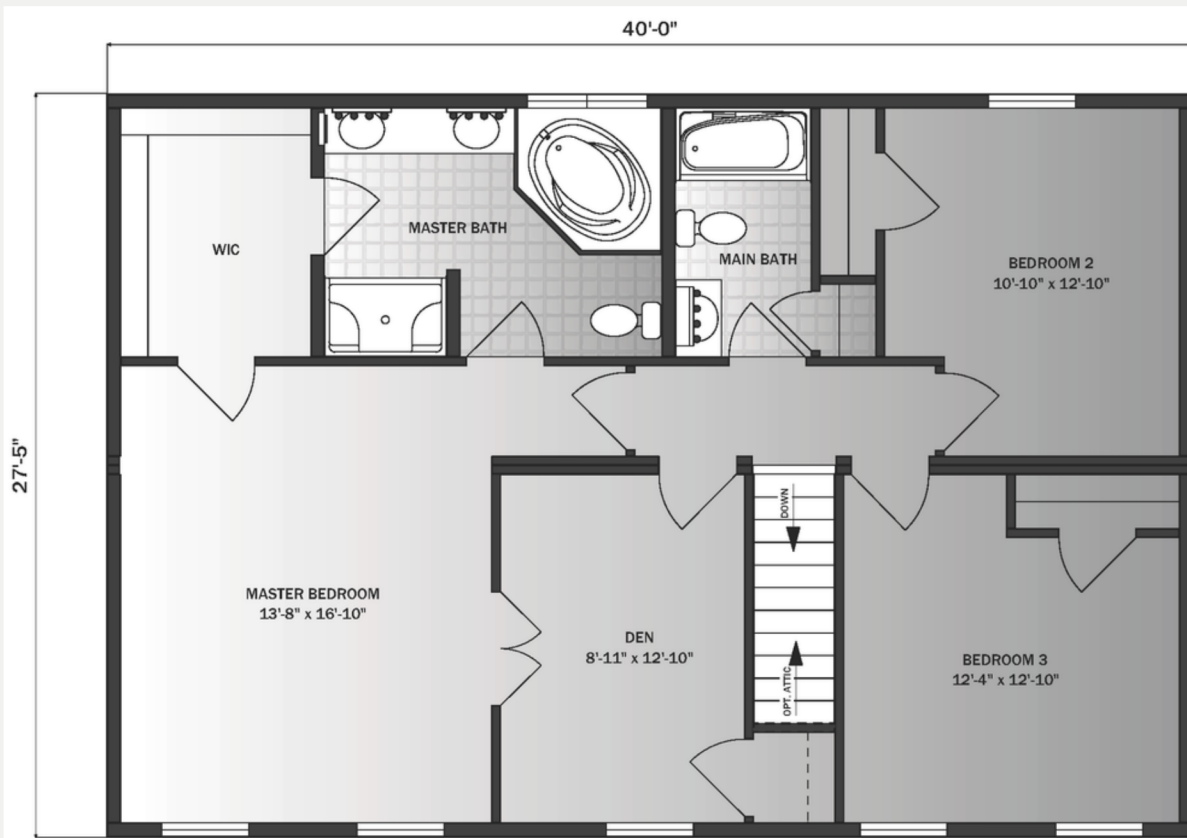
 (207) 572-3258

 sales@americanmodular.me

 www.americanmodular.me

 45 Portland Rd. Gray, ME 04039

Second Floor - 1,097 sq ft



First Floor - 1,097 sq ft

