



**We build Industry-leading homes to suit your lifestyle.**

**AMERICAN MODULAR**

**BELFONT**



**Layout with a welcoming foyer, and second floor with 4 bedrooms. Ideal for narrow, deep building lots.**

**Quality, modern, and energy-efficient homes.**

**Kitchen features a walk-in pantry, raised bar perfect for entertaining, and a half bath is located in the rear hall.**

**HOME FEATURES:**



**4 Bedroom**



**2.5 Bath**



**2,130 Sq Ft**



**Optional Garage**

**Upgrade Options:**

*Roof mounted solar array - granite or quartz counter tops - tile flooring - kitchen backsplash - heat pumps - fire place - garage packages and more!*


We offer custom modular home builds led by an experienced team of engineers and builders crafting your vision into reality.


Our homes meet or exceed current industry standards, so you can build with confidence.


We offer customization, clean finishes, beautiful flooring, carpet, fast turn-around and move-in timelines.

Come and experience the American Modular difference!

**LET'S CONNECT:**

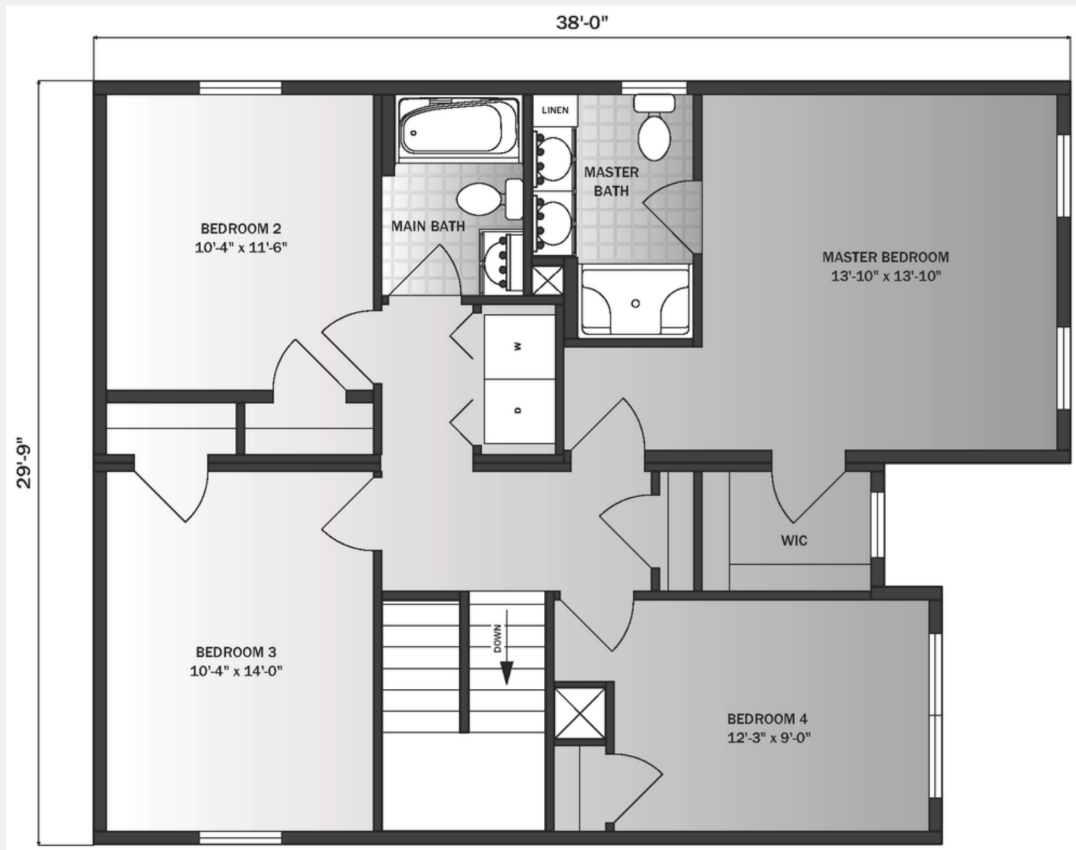
 (207) 572-3258

 [sales@americanmodular.me](mailto:sales@americanmodular.me)

 [www.americanmodular.me](http://www.americanmodular.me)

 45 Portland Rd. Gray, ME 04039

## 2nd Story - 1,065 sqft



## Main Floor - 1,065 sqft

