



**AMERICAN MODULAR**

**We build Industry-leading homes to suit your lifestyle.**

## ***CAPE VERDE***



**Spacious living areas, an over-sized two-car garage, master suite with his and hers walk-in closets, and a home office.**

**Quality, modern, and energy-efficient homes.**

**Available second floor offers two additional bedrooms, bathroom, and loft area.**

### ***HOME FEATURES:***



**1 Bedroom**



**1.5 Bath**



**1,399 Sq Ft**



**Optional Garage**

### ***Upgrade Options:***

*Roof mounted solar array - granite counter tops - tile flooring - kitchen backsplash - heat pumps - fire place - garage packages and more!*


We offer custom modular home builds led by an experienced team of engineers and builders crafting your vision into reality.


Our homes meet or exceed current industry standards, so you can build with confidence.


We offer customization, clean finishes, beautiful flooring, carpet, fast turn-around and move-in timelines.

Come and experience the American Modular difference!

### ***LET'S CONNECT:***

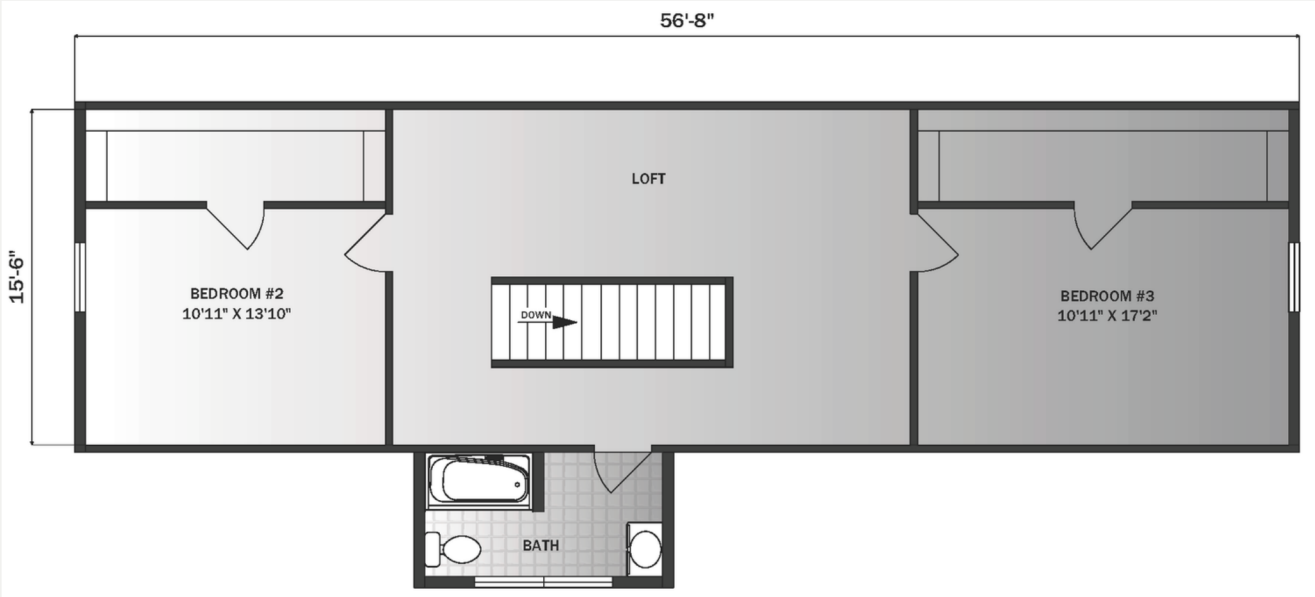
 (207) 572-3258

 [sales@americanmodular.me](mailto:sales@americanmodular.me)

 [www.americanmodular.me](http://www.americanmodular.me)

 45 Portland Rd. Gray, ME 04039

# Available Second Floor - 991 sq ft



# First Floor - 1,399 sq ft

