



We build Industry-leading homes to suit your lifestyle.

AMERICAN MODULAR

DOVER



Ranch offering a large, central gathering place with a kitchen open to dining and living areas.

Quality, modern, and energy-efficient homes.



HOME FEATURES:



3 Bedroom



2 Bath



1,644 Sq Ft



Optional Garage

Upgrade Options:

Roof mounted solar array - granite or quartz counter tops - tile flooring - kitchen backsplash - heat pumps - fire place - garage packages and more!


We offer custom modular home builds led by an experienced team of engineers and builders crafting your vision into reality.


Our homes meet or exceed current industry standards, so you can build with confidence.

We offer customization, clean finishes, beautiful flooring, carpet, fast turn-around and move-in timelines.


Come and experience the American Modular difference!

LET'S CONNECT:

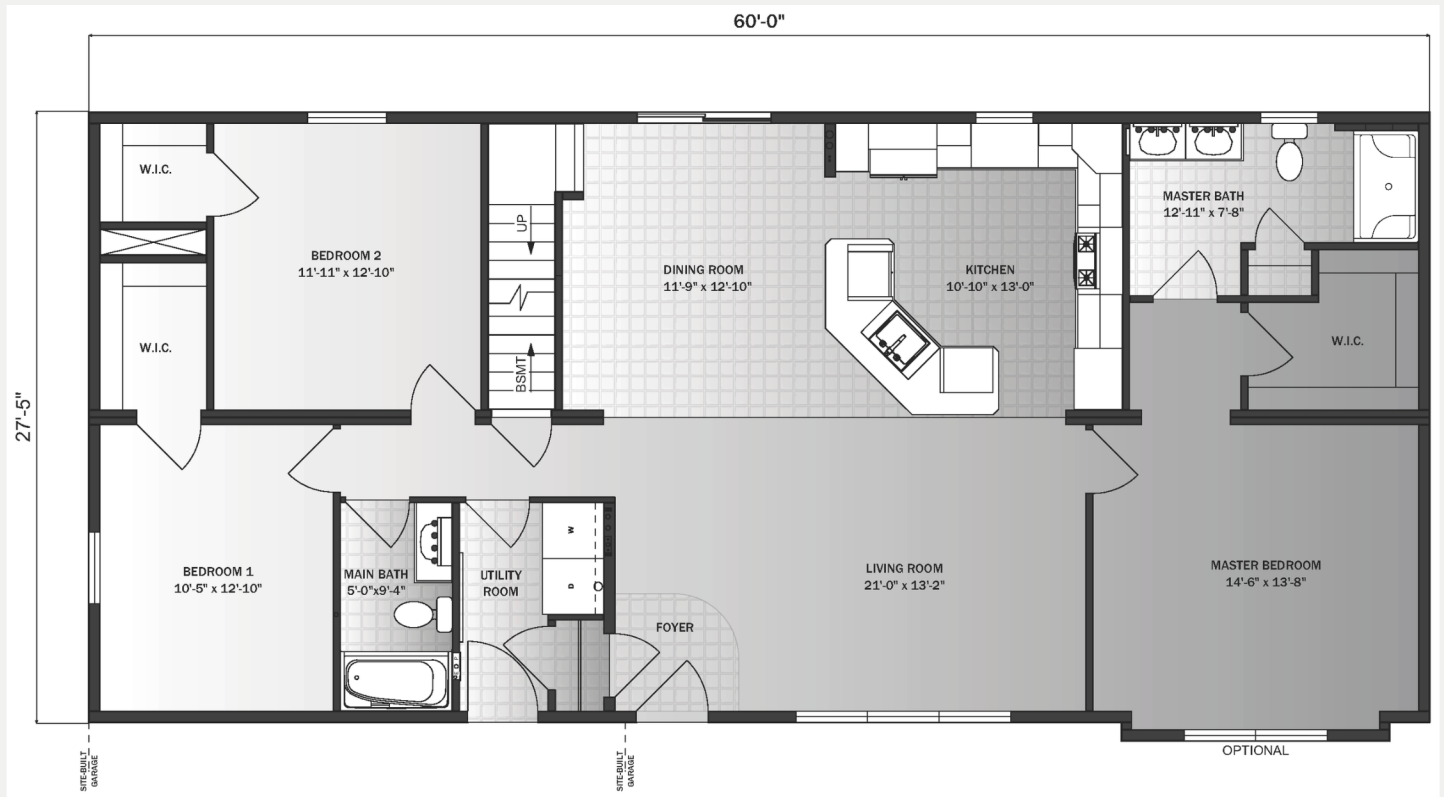
 (207) 572-3258

 sales@americanmodular.me

 www.americanmodular.me

 45 Portland Rd. Gray, ME 04039

First Floor - 1,644 sq ft



Optional Second Floor

