



AMERICAN MODULAR

We build Industry-leading homes to suit your lifestyle.

## FAIRVUE II



Small plan offering quite a lot! Enter through the formal foyer and into the expansive, open living room and kitchen & dining area.

Quality, modern, and energy-efficient homes.

An attached garage offers the option to add additional living space or an unfinished attic over the garage.

### HOME FEATURES:



3 Bedroom



2.5 Bath



1,645 Sq Ft



Optional Garage

### Upgrade Options:

Roof mounted solar array - granite counter tops - tile flooring - kitchen backsplash - heat pumps - fire place - garage packages and more!


We offer custom modular home builds led by an experienced team of engineers and builders crafting your vision into reality.


Our homes meet or exceed current industry standards, so you can build with confidence.


We offer customization, clean finishes, beautiful flooring, carpet, fast turn-around and move-in timelines.

Come and experience the American Modular difference!

### LET'S CONNECT:

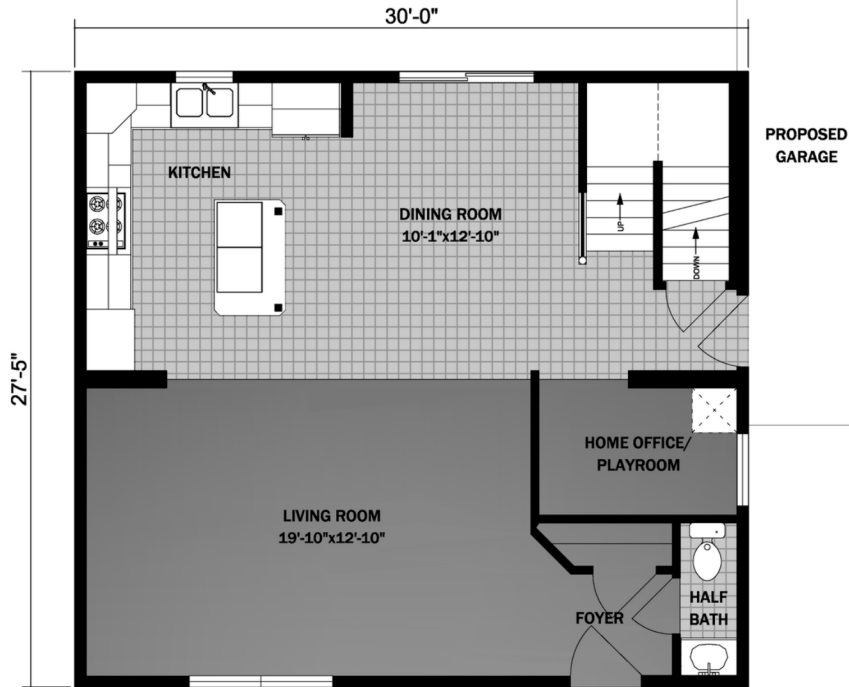
 (207) 572-3258

 sales@americanmodular.me

 www.americanmodular.me

 45 Portland Rd. Gray, ME 04039

# First Floor - 823 sq ft



# Second Floor - 823 sq ft

