



We build Industry-leading homes to suit your lifestyle.

FLAGSTAFF



Spacious open living area, large kitchen, and spacious pantry.

Quality, modern, and energy-efficient homes.

Ample space for extended family or in-home care.

HOME FEATURES:



4 Bedroom



3 Bath



1,755 Sq Ft



Optional Garage

Upgrade Options:

Roof mounted solar array - granite counter tops - tile flooring - kitchen backsplash - heat pumps - fire place - garage packages and more!


We offer custom modular home builds led by an experienced team of engineers and builders crafting your vision into reality.

Our homes meet or exceed current industry standards, so you can build with confidence.


We offer customization, clean finishes, beautiful flooring, carpet, fast turn-around and move-in timelines.


Come and experience the American Modular difference!

LET'S CONNECT:

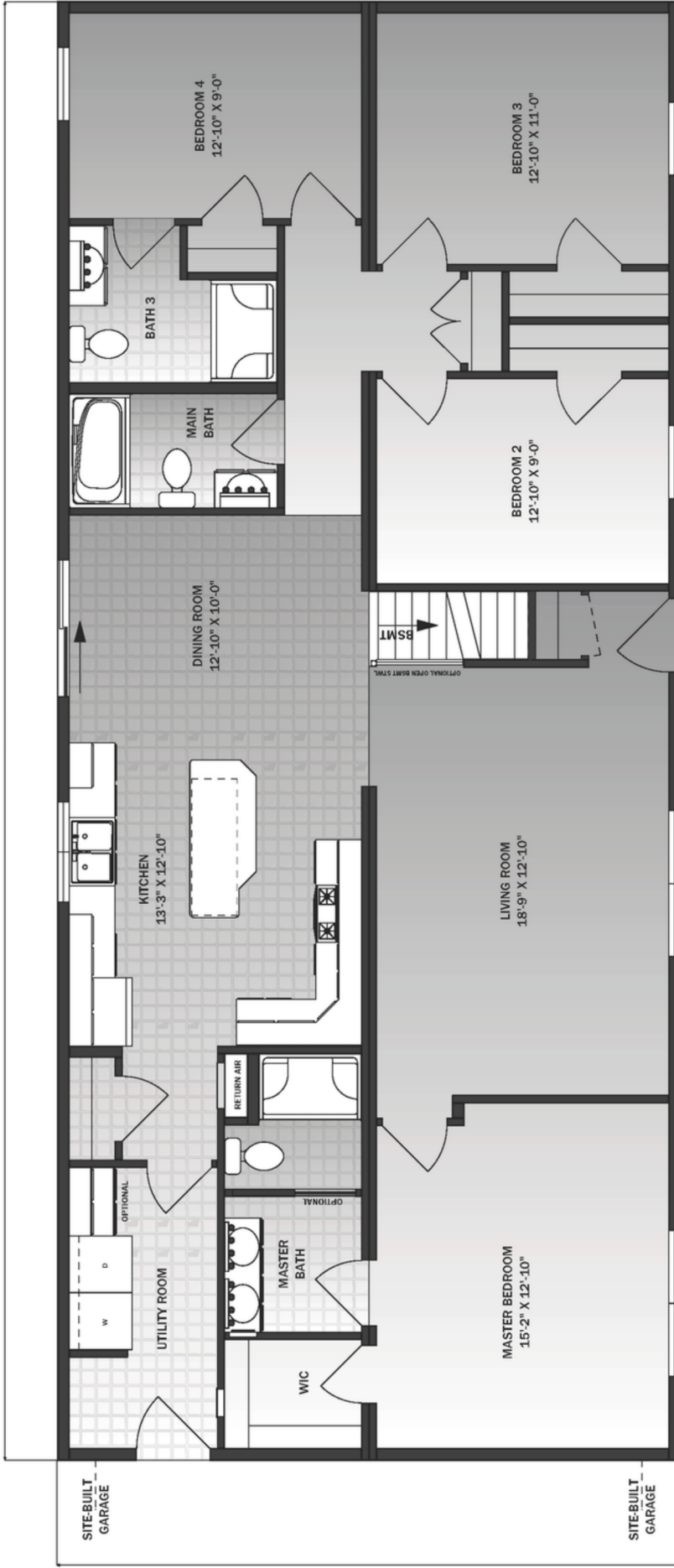
 (207) 572-3258

 sales@americanmodular.me

 www.americanmodular.me

 45 Portland Rd. Gray, ME 04039

64'-0"



OPTIONAL SADDLE ROOF PORCH

27'-5"