



**We build Industry-leading homes to suit your lifestyle.**

**AMERICAN MODULAR**

# ***GAMBLE***



**An excellent family home, the Gamble features a welcoming front foyer that connects the front and rear/garage entrances to the home.**

**Quality, modern, and energy-efficient homes.**

**Featuring an open living and dining area with a casual bar, pantry cabinet and working island in the kitchen.**

## ***HOME FEATURES:***



**3 Bedroom**



**2.5 Bath**



**1,755 Sq Ft**



**Optional Garage**

## ***Upgrade Options:***

*Roof mounted solar array - granite counter tops - tile flooring - kitchen backsplash - heat pumps - fire place - garage packages and more!*


We offer custom modular home builds led by an experienced team of engineers and builders crafting your vision into reality.

Our homes meet or exceed current industry standards, so you can build with confidence.


We offer customization, clean finishes, beautiful flooring, carpet, fast turn-around and move-in timelines.


Come and experience the American Modular difference!

## ***LET'S CONNECT:***

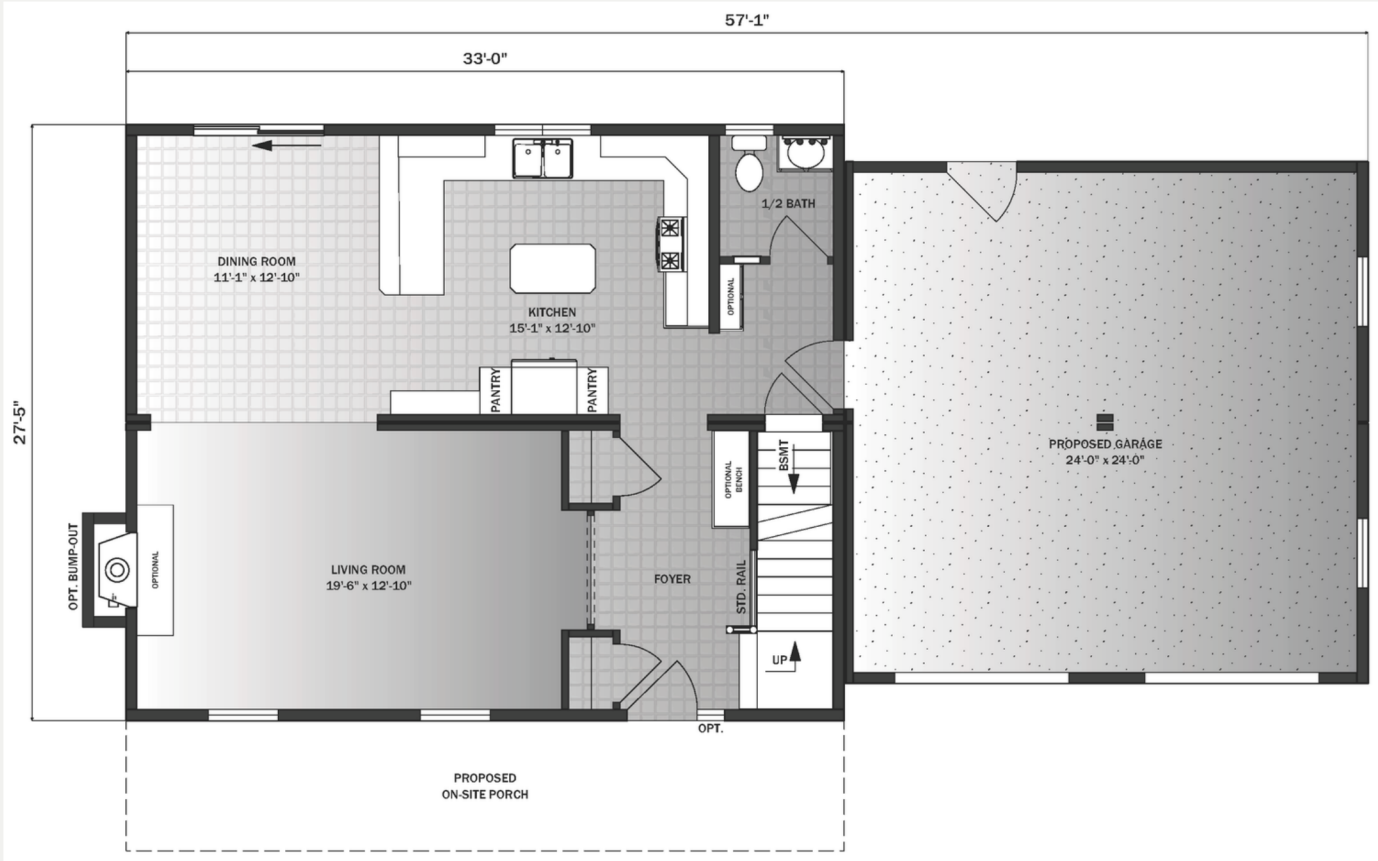
 (207) 572-3258

 [sales@americanmodular.me](mailto:sales@americanmodular.me)

 [www.americanmodular.me](http://www.americanmodular.me)

 45 Portland Rd. Gray, ME 04039

# First Floor - 877 sq ft



# Second Floor - 877 sq ft

