



We build Industry-leading homes to suit your lifestyle.

AMERICAN MODULAR

GREENFIELD



Spacious welcoming foyer opens into a large living and dining area.

Quality, modern, and energy-efficient homes.

Open, functional kitchen faces the living and dining areas for observation and entertaining.

HOME FEATURES:



3 Bedroom



2 Bath



1,590 Sq Ft



Optional Garage

Upgrade Options:

Roof mounted solar array - granite counter tops - tile flooring - kitchen backsplash - heat pumps - fire place - garage packages and more!


We offer custom modular home builds led by an experienced team of engineers and builders crafting your vision into reality.


Our homes meet or exceed current industry standards, so you can build with confidence.


We offer customization, clean finishes, beautiful flooring, carpet, fast turn-around and move-in timelines.

Come and experience the American Modular difference!

LET'S CONNECT:

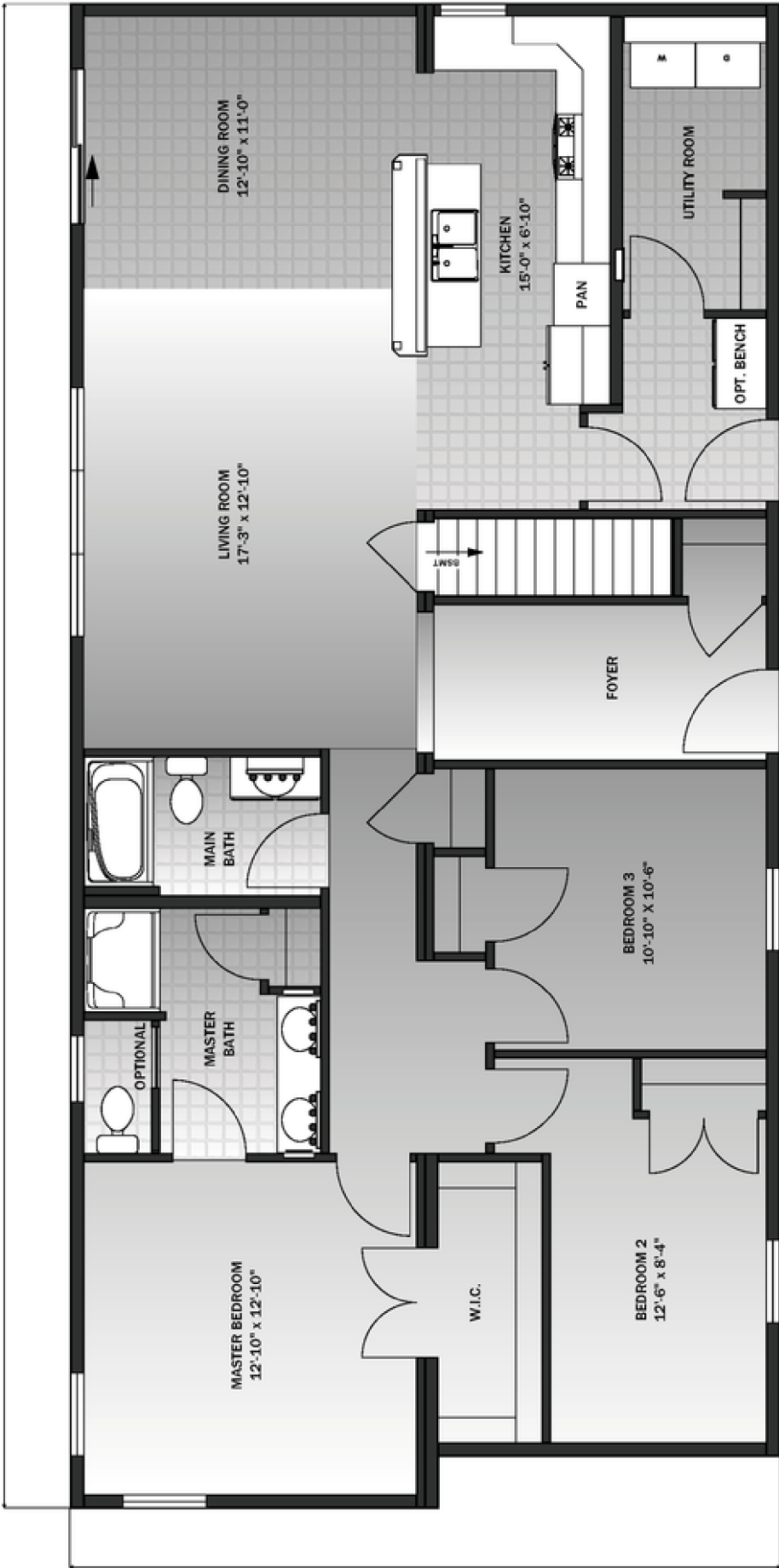
 (207) 572-3258

 sales@americanmodular.me

 www.americanmodular.me

 45 Portland Rd. Gray, ME 04039

58'-0"



27'-5"