



**We build Industry-leading homes to suit your lifestyle.**

**AMERICAN MODULAR**

**JASMINE**



**Duplex unit - each with 2 bedrooms, 1.5 bath, 1,316 sq ft.**

**Quality, modern, and energy-efficient homes.**

**Ideal for rental units or multi-family.**

**HOME FEATURES:**



**2 Bedroom**



**1.5 Bath**



**1,316 Sq Ft**



**Optional Garage**

**Upgrade Options:**

*Roof mounted solar array - granite counter tops - tile flooring - kitchen backsplash - heat pumps - fire place - garage packages and more!*


We offer custom modular home builds led by an experienced team of engineers and builders crafting your vision into reality.

Our homes meet or exceed current industry standards, so you can build with confidence.


We offer customization, clean finishes, beautiful flooring, carpet, fast turn-around and move-in timelines.


Come and experience the American Modular difference!

**LET'S CONNECT:**

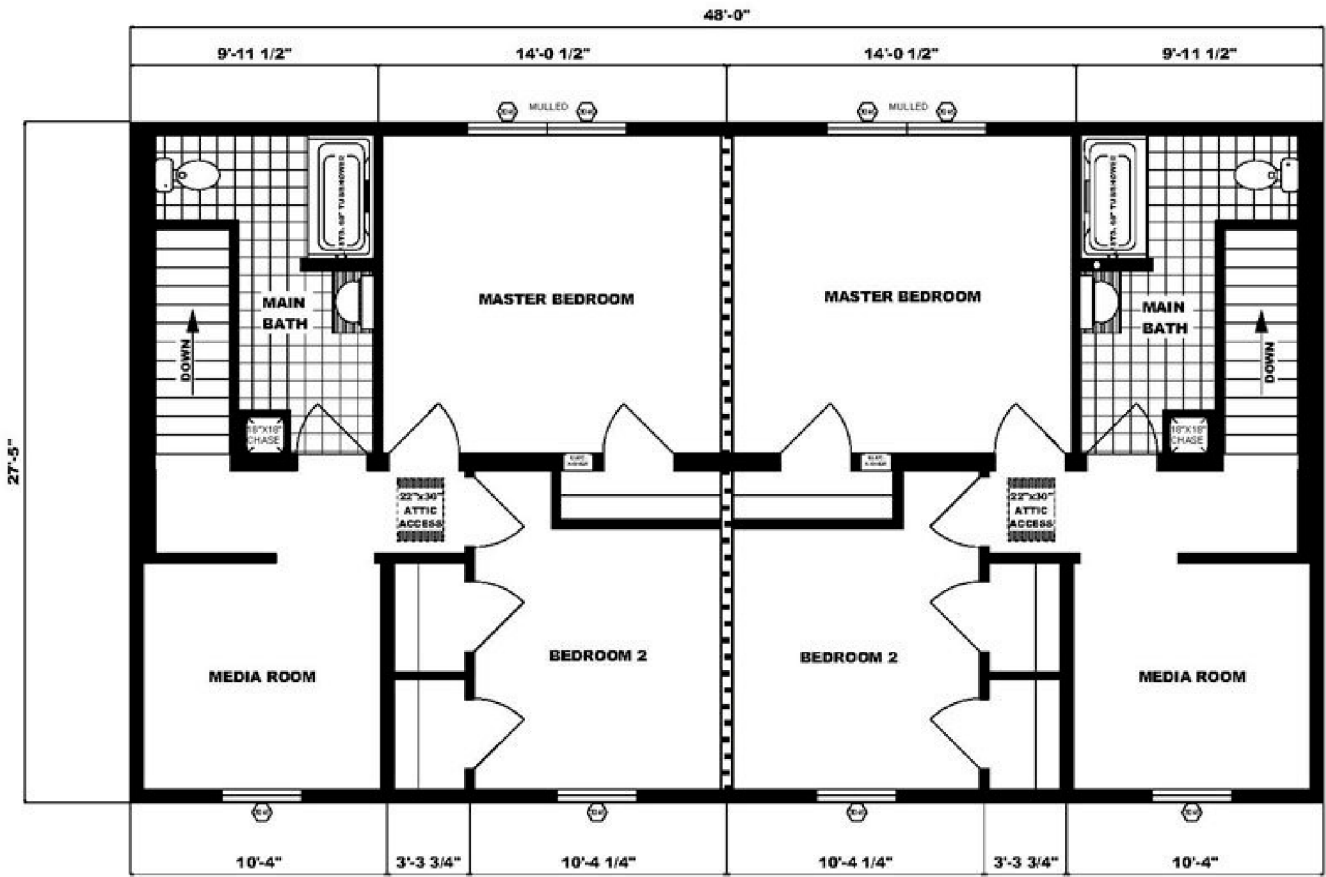
 (207) 572-3258

 [sales@americanmodular.me](mailto:sales@americanmodular.me)

 [www.americanmodular.me](http://www.americanmodular.me)

 45 Portland Rd. Gray, ME 04039

# Second Floor



# First Floor

