



AMERICAN MODULAR

We build Industry-leading homes to suit your lifestyle.

LAKE GEORGE



Country-style elevation on one side and a chalet-style elevation on the other, this layout offers the best elements of both.

Quality, modern, and energy-efficient homes.



HOME FEATURES:



3 Bedroom



2.5 Bath



2,186 Sq Ft



Optional Garage

Upgrade Options:
Roof mounted solar array - granite counter tops - tile flooring - kitchen backsplash - heat pumps - fire place - garage packages and more!

We offer custom modular home builds led by an experienced team of engineers and builders crafting your vision into reality.

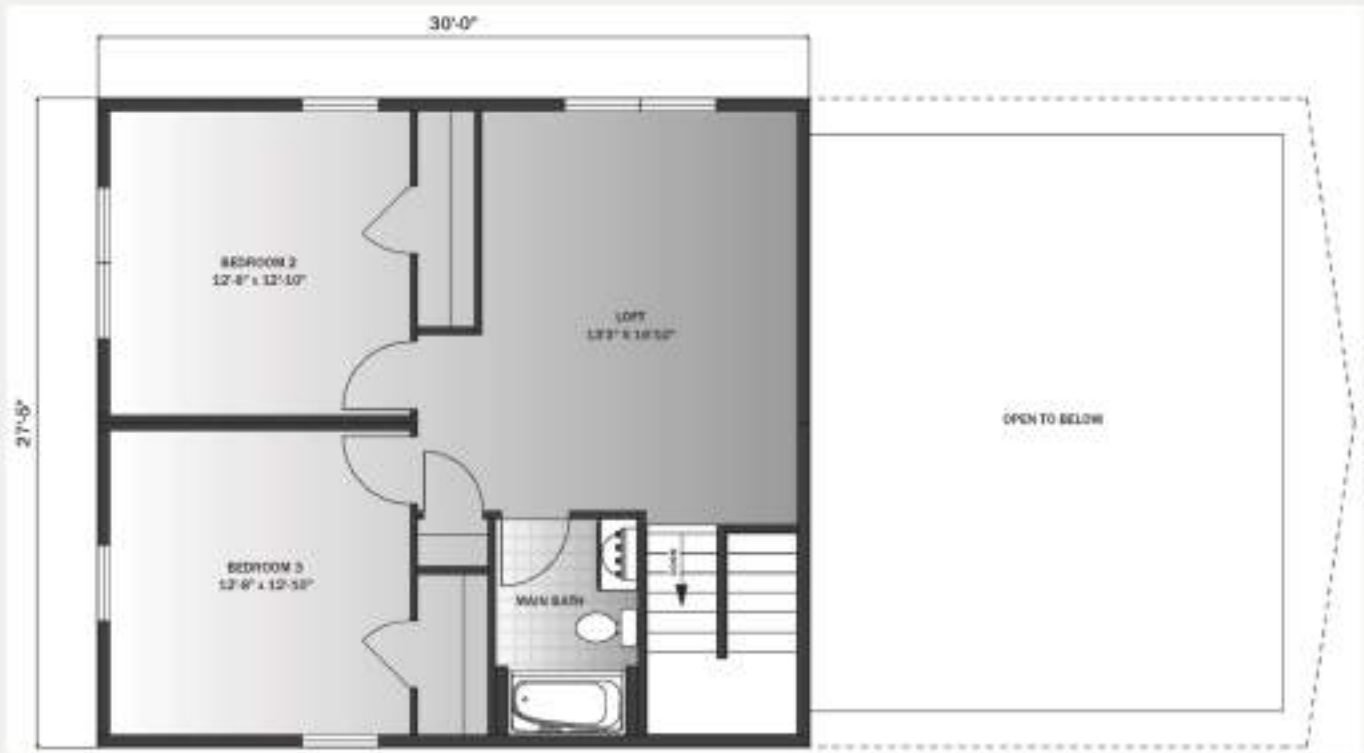
Our homes meet or exceed current industry standards, so you can build with confidence.

We offer customization, clean finishes, beautiful flooring, carpet, fast turn-around and move-in timelines.

Come and experience the American Modular difference!

LET'S CONNECT:
☎ (207) 572-3258
✉ sales@americanmodular.me
🌐 www.americanmodular.me
📍 45 Portland Rd. Gray, ME 04039

Second Floor



First Floor

