



AMERICAN MODULAR

We build Industry-leading homes to suit your lifestyle.

LAKE SAINT CATHERINE



Designed to accommodate both a front entrance and a rear view. This plan boasts two bedrooms, each with private bathrooms.

Quality, modern, and energy-efficient homes.

Available second floor offers additional bedroom and bathroom.

HOME FEATURES:



2 Bedroom



2 Bath



1,371 Sq Ft



Optional Garage

Upgrade Options:

Roof mounted solar array - granite counter tops - tile flooring - kitchen backsplash - heat pumps - fire place - garage packages and more!


We offer custom modular home builds led by an experienced team of engineers and builders crafting your vision into reality.


Our homes meet or exceed current industry standards, so you can build with confidence.


We offer customization, clean finishes, beautiful flooring, carpet, fast turn-around and move-in timelines.


Come and experience the American Modular difference!

LET'S CONNECT:

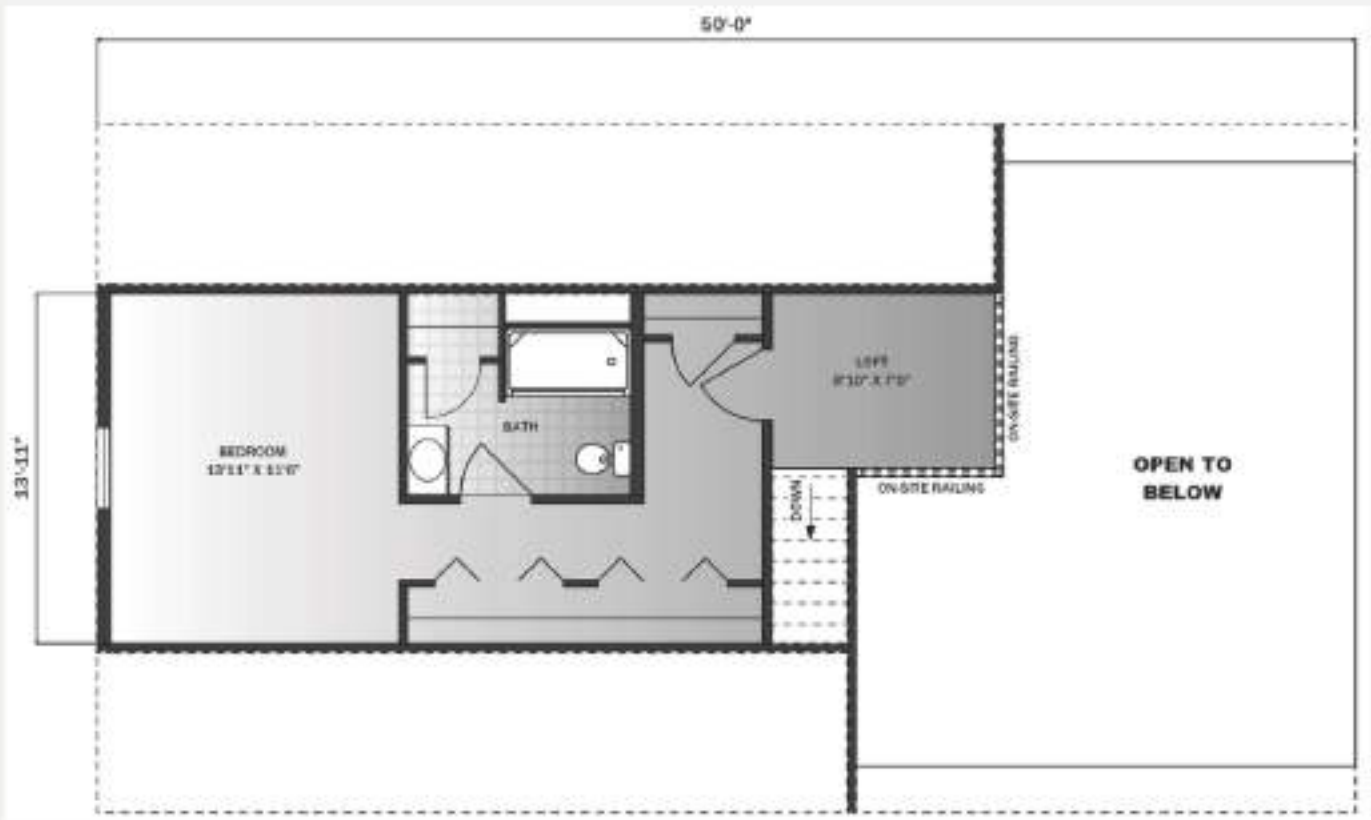
 (207) 572-3258

 sales@americanmodular.me

 www.americanmodular.me

 45 Portland Rd. Gray, ME 04039

Available Second Floor - 460 sq ft



First Floor - 1,371 sq ft

