



**AMERICAN MODULAR**

**We build Industry-leading homes to suit your lifestyle.**

## ***LAKE SUNAPEE***



**Perfect cabin featuring a vaulted living room and kitchen/dining area. Model shown with optional western red cedar lap siding, dormers and porch.**

**Quality, modern, and energy-efficient homes.**

**Available second floor offers additional bedroom and bathroom to the left of a stair landing that overlooks the living and dining areas.**

### ***HOME FEATURES:***



**1 Bedroom**



**1.5 Bath**



**823 Sq Ft**



**Optional Garage**

### ***Upgrade Options:***

*Roof mounted solar array - granite counter tops - tile flooring - kitchen backsplash - heat pumps - fire place - garage packages and more!*


We offer custom modular home builds led by an experienced team of engineers and builders crafting your vision into reality.


Our homes meet or exceed current industry standards, so you can build with confidence.


We offer customization, clean finishes, beautiful flooring, carpet, fast turn-around and move-in timelines.

Come and experience the American Modular difference!

### ***LET'S CONNECT:***

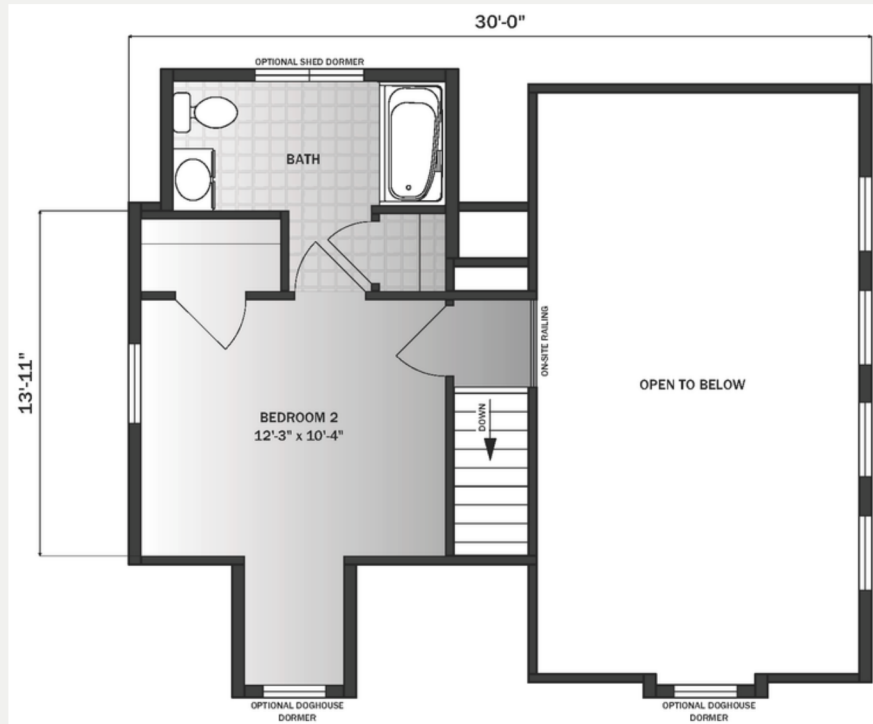
 (207) 572-3258

 [sales@americanmodular.me](mailto:sales@americanmodular.me)

 [www.americanmodular.me](http://www.americanmodular.me)

 45 Portland Rd. Gray, ME 04039

## Available Second Floor - 260 sq ft



## First Floor - 823 sq ft

