



**We build Industry-leading homes to suit your lifestyle.**

**AMERICAN MODULAR**

# **LAKE VICTORIA B**



**Most popular chalet, featuring ample glazing in the spacious, open living areas as well as an oversized kitchen with eat-at bar and working island.**

**Quality, modern, and energy-efficient homes.**



## **HOME FEATURES:**



**2 Bedroom**



**2 Bath**



**1,426 Sq Ft**



**Optional Garage**

## **Upgrade Options:**

*Roof mounted solar array - granite counter tops - tile flooring - kitchen backsplash - heat pumps - fire place - garage packages and more!*


We offer custom modular home builds led by an experienced team of engineers and builders crafting your vision into reality.


Our homes meet or exceed current industry standards, so you can build with confidence.


We offer customization, clean finishes, beautiful flooring, carpet, fast turn-around and move-in timelines.


Come and experience the American Modular difference!

## **LET'S CONNECT:**

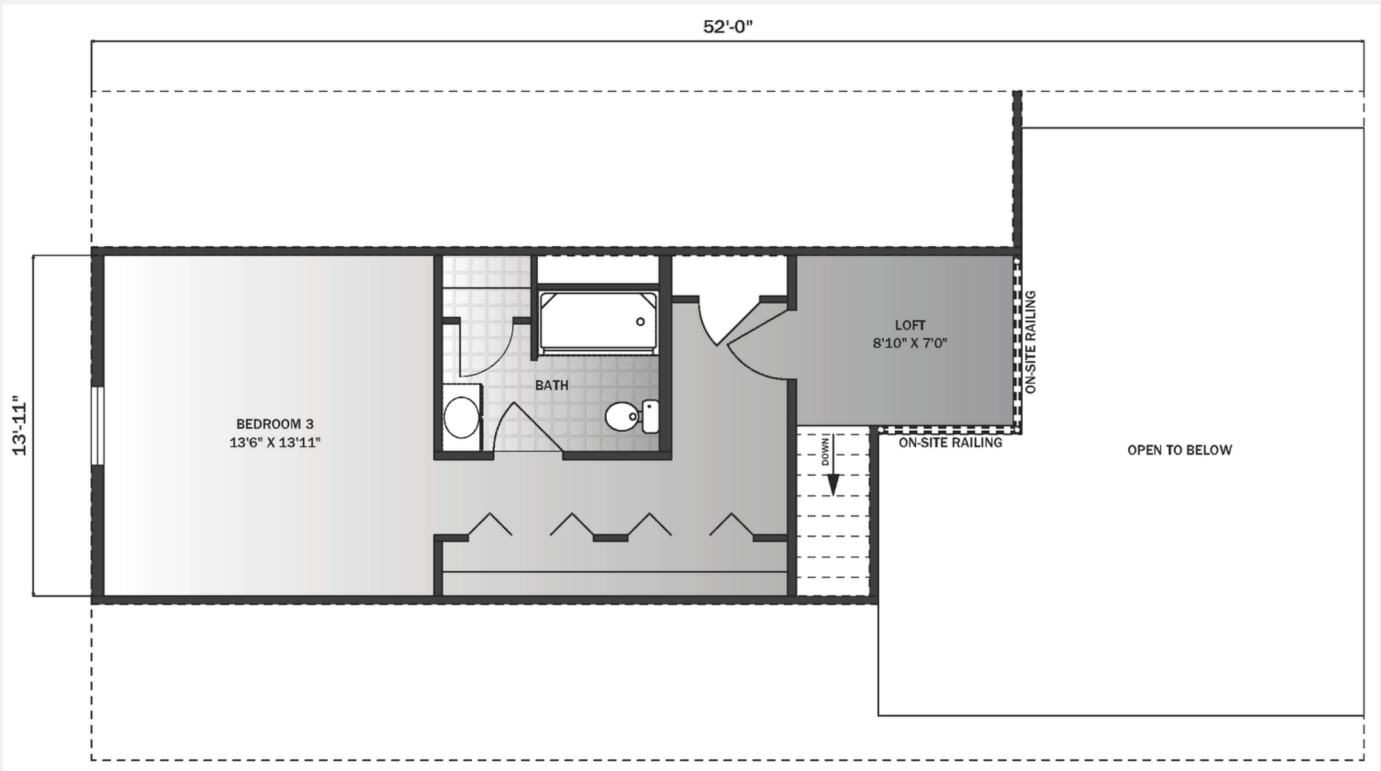
 (207) 572-3258

 [sales@americanmodular.me](mailto:sales@americanmodular.me)

 [www.americanmodular.me](http://www.americanmodular.me)

 45 Portland Rd. Gray, ME 04039

## Available Second Floor - 460 sq ft



## First Floor - 1,426 sq ft

