



We build Industry-leading homes to suit your lifestyle.

AMERICAN MODULAR

LAKE WENTWORTH



Optimized for space and cost - makes for an excellent vacation home or rental property.

Quality, modern, and energy-efficient homes.

Primary bedroom features an ensuite bath with 48" shower.

HOME FEATURES:



3 Bedroom



2 Bath



1,206 Sq Ft



Optional Garage

Upgrade Options:

Roof mounted solar array - granite counter tops - tile flooring - kitchen backsplash - heat pumps - fire place - garage packages and more!


We offer custom modular home builds led by an experienced team of engineers and builders crafting your vision into reality.


Our homes meet or exceed current industry standards, so you can build with confidence.


We offer customization, clean finishes, beautiful flooring, carpet, fast turn-around and move-in timelines.

Come and experience the American Modular difference!

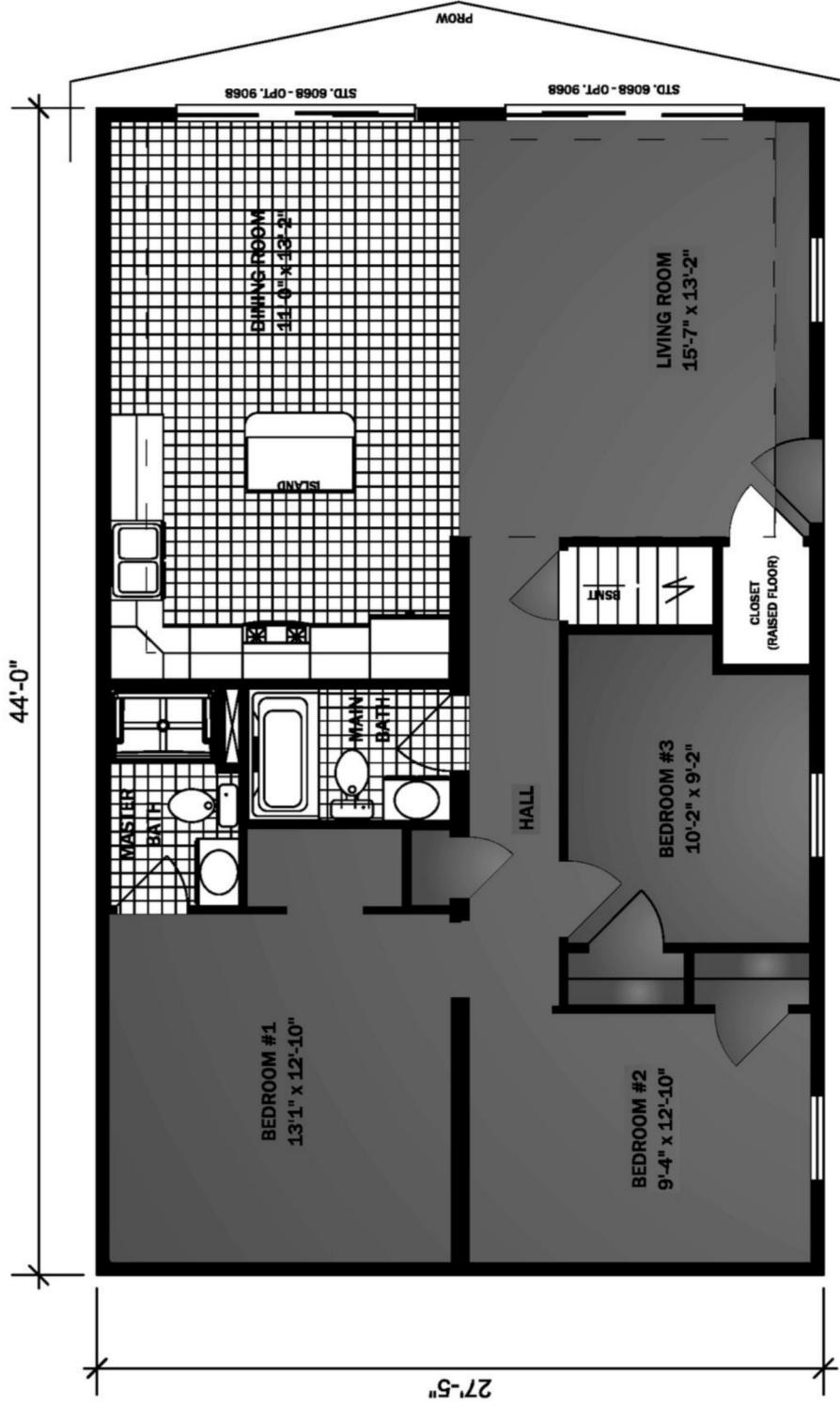
LET'S CONNECT:

 (207) 572-3258

 sales@americanmodular.me

 www.americanmodular.me

 45 Portland Rd. Gray, ME 04039



STD. 6068 - OPT. 9068

STD. 6068 - OPT. 9068

PROW

44'-0"

27'-5"

DINING ROOM
11'-0" x 13'-2"

LIVING ROOM
15'-7" x 13'-2"

BEDROOM #1
13'-1" x 12'-10"

BEDROOM #2
9'-4" x 12'-10"

BEDROOM #3
10'-2" x 9'-2"

CLOSET
(RAISED FLOOR)

BSMT

HALL

MASTER BATH

MAIN BATH

ISLAND