



AMERICAN MODULAR

We build Industry-leading homes to suit your lifestyle.

LAKE WINNIPESAUKEE



Designed to capture a view, the vaulted great room accommodates living and dining spaces. The open kitchen features a bar overhang.

Quality, modern, and energy-efficient homes.

Available second floor offers a bedroom, bathroom, bonus room and loft area.

HOME FEATURES:



3 Bedroom



2 Bath



1,580 Sq Ft



Optional Garage

Upgrade Options:

Roof mounted solar array - granite counter tops - tile flooring - kitchen backsplash - heat pumps - fire place - garage packages and more!


We offer custom modular home builds led by an experienced team of engineers and builders crafting your vision into reality.


Our homes meet or exceed current industry standards, so you can build with confidence.


We offer customization, clean finishes, beautiful flooring, carpet, fast turn-around and move-in timelines.

Come and experience the American Modular difference!

LET'S CONNECT:

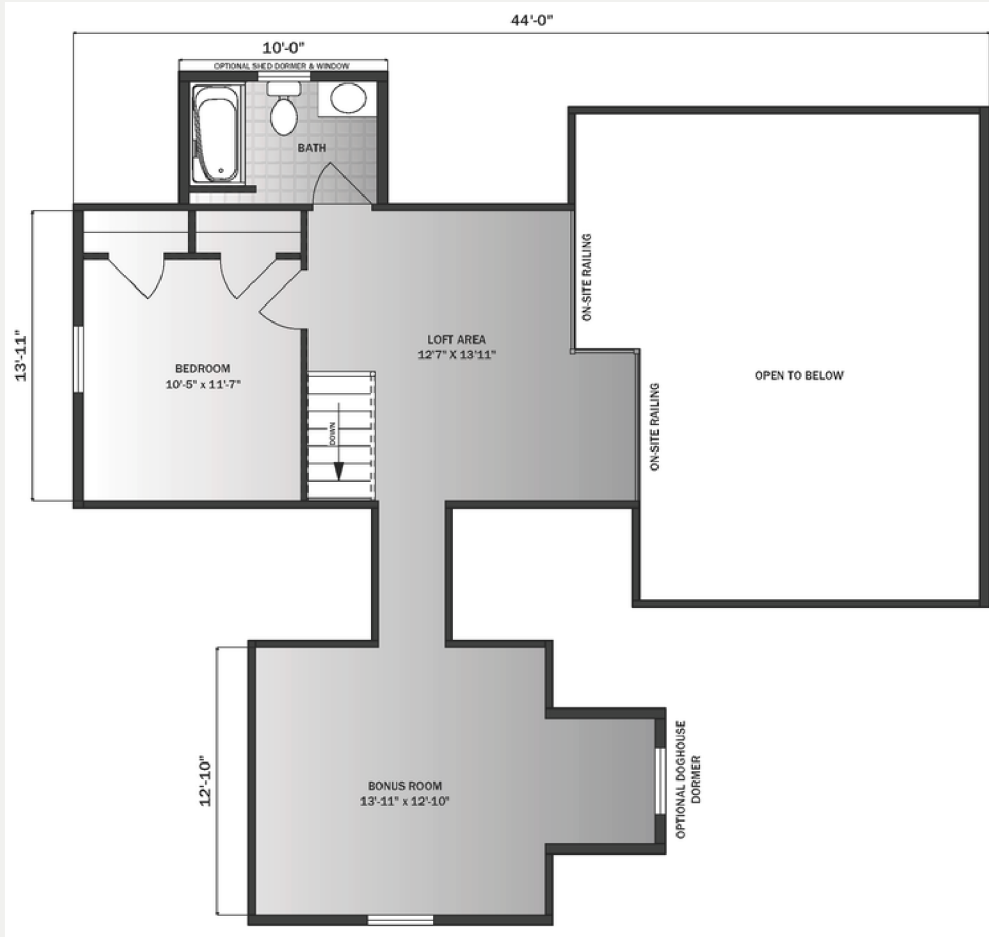
 (207) 572-3258

 sales@americanmodular.me

 www.americanmodular.me

 45 Portland Rd. Gray, ME 04039

Available Second Floor - 605 sq ft



First Floor - 1,580 sq ft

