



**We build Industry-leading homes to suit your lifestyle.**

**AMERICAN MODULAR**

## *MAYFIELD II*



**Quality, modern,  
and  
energy-efficient  
homes.**



### *HOME FEATURES:*



**3 Bedroom**



**2 Bath**



**1,683 Sq Ft**



**Optional Garage**

### *Upgrade Options:*

*Roof mounted solar array - granite or quartz counter tops - tile flooring - kitchen backsplash - heat pumps - fire place - garage packages and more!*


We offer custom modular home builds led by an experienced team of engineers and builders crafting your vision into reality.


Our homes meet or exceed current industry standards, so you can build with confidence.

We offer customization, clean finishes, beautiful flooring, carpet, fast turn-around and move-in timelines.


Come and experience the American Modular difference!

### *LET'S CONNECT:*

 (207) 572-3258

 [sales@americanmodular.me](mailto:sales@americanmodular.me)

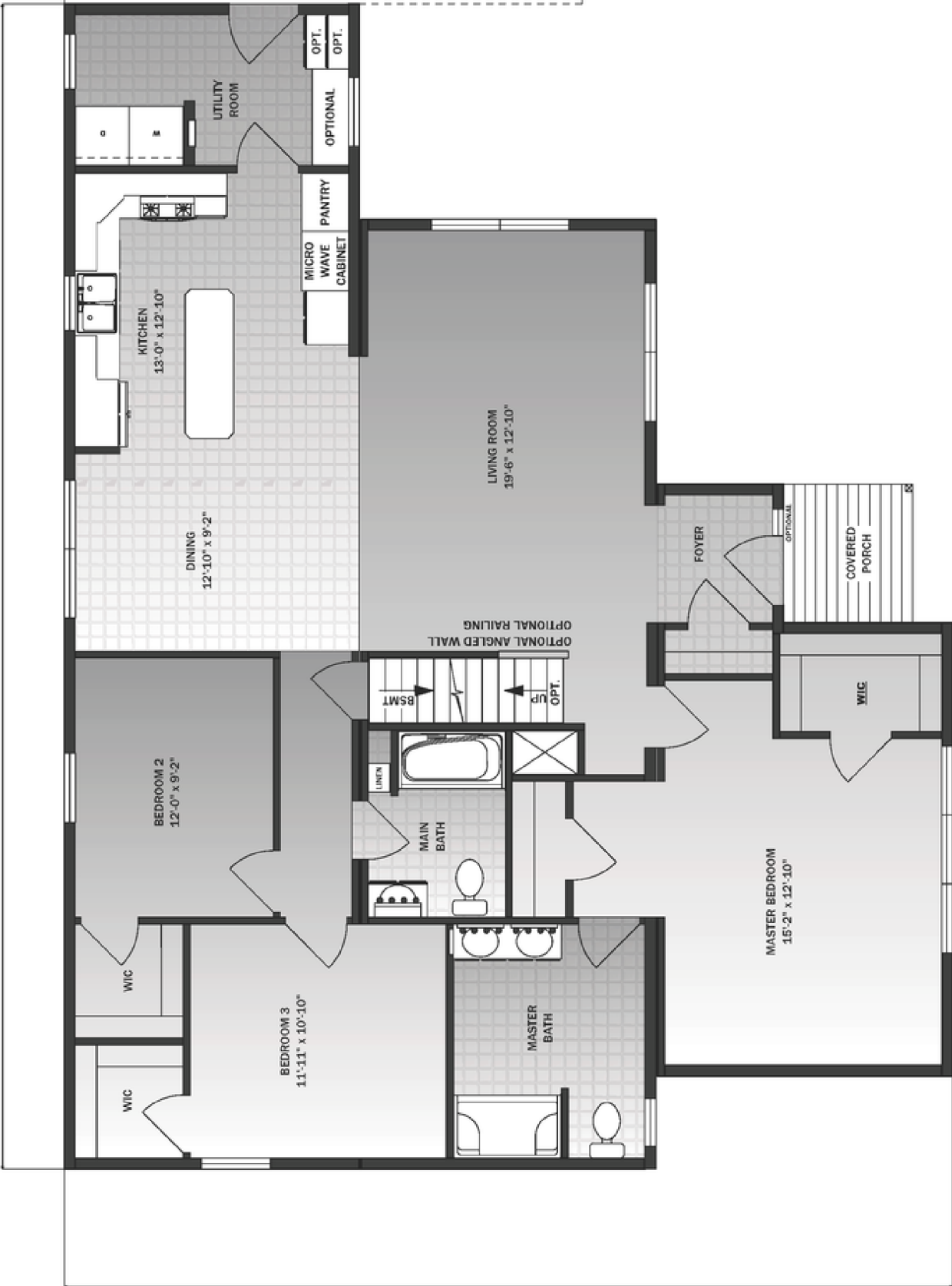
 [www.americanmodular.me](http://www.americanmodular.me)

 45 Portland Rd. Gray, ME 04039

54'-0"

SITE-BUILT GARAGE

SITE-BUILT GARAGE



41'-2"

OPTIONAL BUMP OUT