



We build Industry-leading homes to suit your lifestyle.

AMERICAN MODULAR

SALISBURY I



**Quality, modern,
and
energy-efficient
homes.**



HOME FEATURES:



3 Bedroom



2 Bath



1,560 Sq Ft



Optional Garage

Upgrade Options:

Roof mounted solar array - granite or quartz counter tops - tile flooring - kitchen backsplash - heat pumps - fire place - garage packages and more!


We offer custom modular home builds led by an experienced team of engineers and builders crafting your vision into reality.


Our homes meet or exceed current industry standards, so you can build with confidence.


We offer customization, clean finishes, beautiful flooring, carpet, fast turn-around and move-in timelines.


Come and experience the American Modular difference!

LET'S CONNECT:

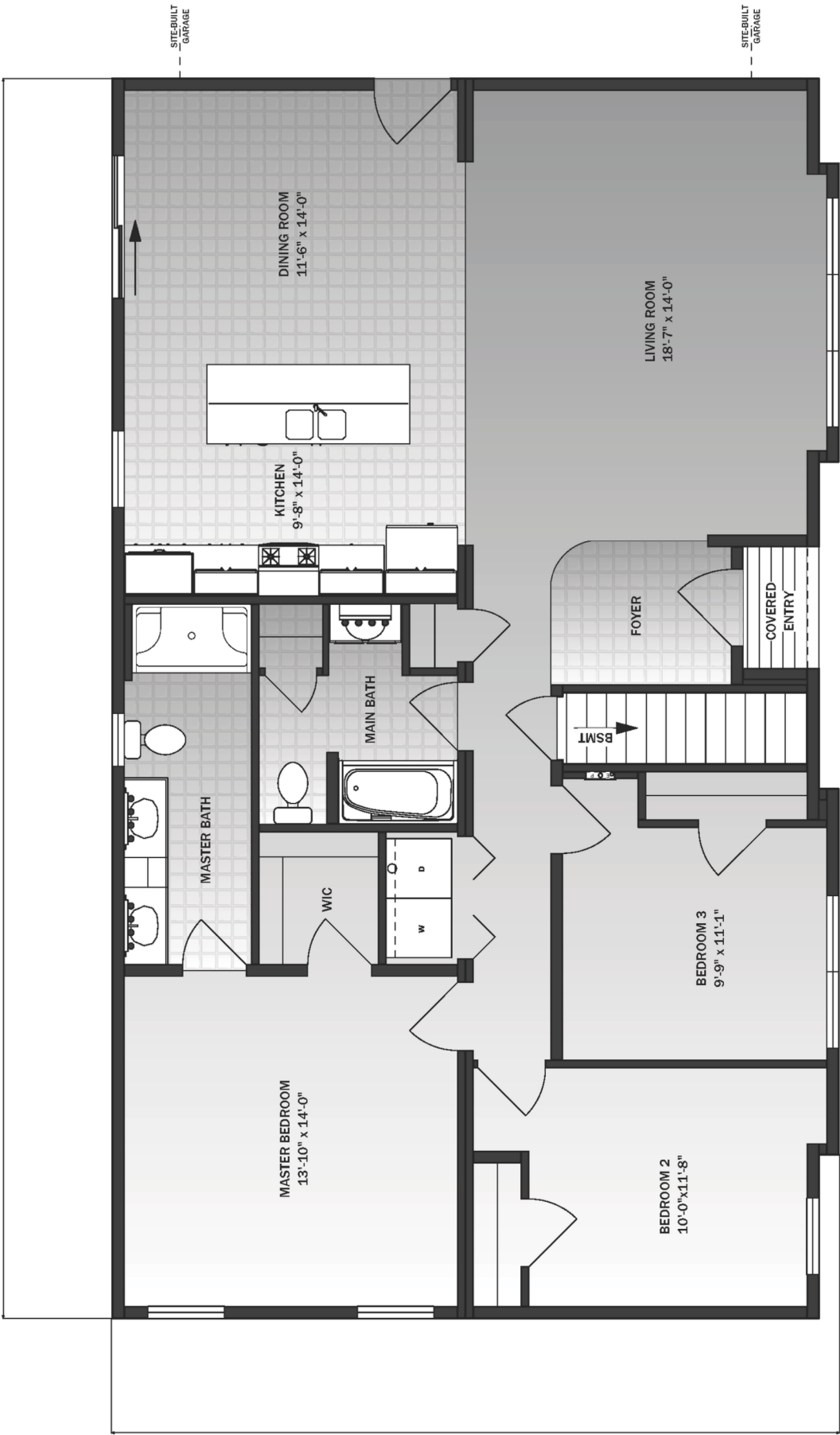
 (207) 572-3258

 sales@americanmodular.me

 www.americanmodular.me

 45 Portland Rd. Gray, ME 04039

52'-0"



SITE-BUILT GARAGE

SITE-BUILT GARAGE

DINING ROOM
11'-6" x 14'-0"

KITCHEN
9'-8" x 14'-0"

LIVING ROOM
18'-7" x 14'-0"

MASTER BATH

MAIN BATH

FOYER

COVERED ENTRY

BSMT

MASTER BEDROOM
13'-10" x 14'-0"

WIC

BEDROOM 3
9'-9" x 11'-1"

BEDROOM 2
10'-0" x 11'-8"

OPTIONAL

OPTIONAL

30'-7"