



**We build Industry-leading homes to suit your lifestyle.**

**AMERICAN MODULAR**

***SHIRLEY***



**Traditionally-styled colonial with soaring foyer. Living room opens to the kitchen and dining area.**

**Quality, modern, and energy-efficient homes.**



***HOME FEATURES:***



**3 Bedroom**



**2.5 Bath**



**1,955 Sq Ft**



**Optional Garage**

***Upgrade Options:***

*Roof mounted solar array - granite or quartz counter tops - tile flooring - kitchen backsplash - heat pumps - fire place - garage packages and more!*


We offer custom modular home builds led by an experienced team of engineers and builders crafting your vision into reality.


Our homes meet or exceed current industry standards, so you can build with confidence.


We offer customization, clean finishes, beautiful flooring, carpet, fast turn-around and move-in timelines.


Come and experience the American Modular difference!

***LET'S CONNECT:***

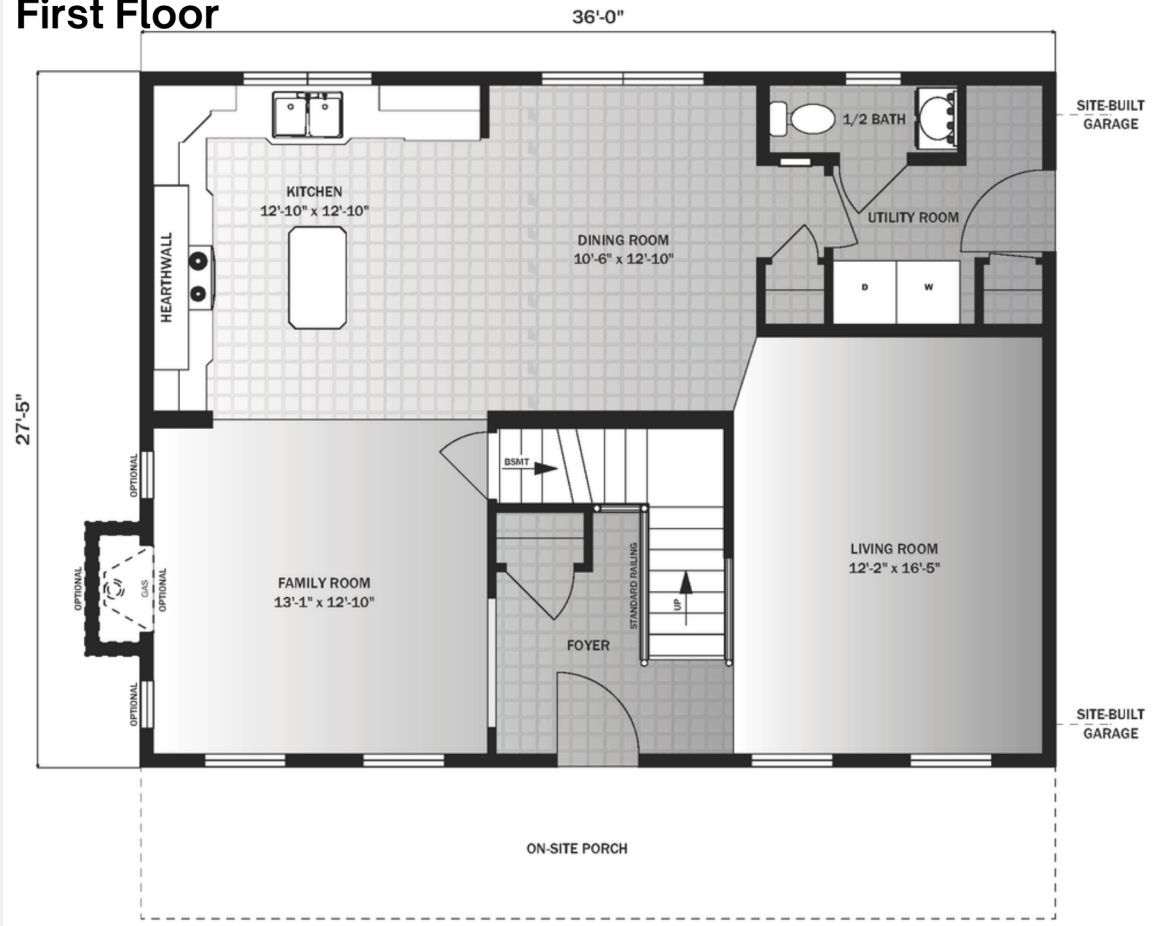
 (207) 572-3258

 [sales@americanmodular.me](mailto:sales@americanmodular.me)

 [www.americanmodular.me](http://www.americanmodular.me)

 45 Portland Rd. Gray, ME 04039

# First Floor



# Second Floor

