



We build Industry-leading homes to suit your lifestyle.

AMERICAN MODULAR

W A V E R L Y



Designed for a narrow, deep lot with a large family room leading into the luxury kitchen.

Quality, modern, and energy-efficient homes.

First floor is rounded out with spacious and connected front and rear entries. Second floor features a spacious master suite.

HOME FEATURES:



3 Bedroom



2.5 Bath



2,031 Sq Ft



Optional Garage

Upgrade Options:

Roof mounted solar array - granite counter tops - tile flooring - kitchen backsplash - heat pumps - fire place - garage packages and more!


We offer custom modular home builds led by an experienced team of engineers and builders crafting your vision into reality.


Our homes meet or exceed current industry standards, so you can build with confidence.


We offer customization, clean finishes, beautiful flooring, carpet, fast turn-around and move-in timelines.


Come and experience the American Modular difference!

LET'S CONNECT:

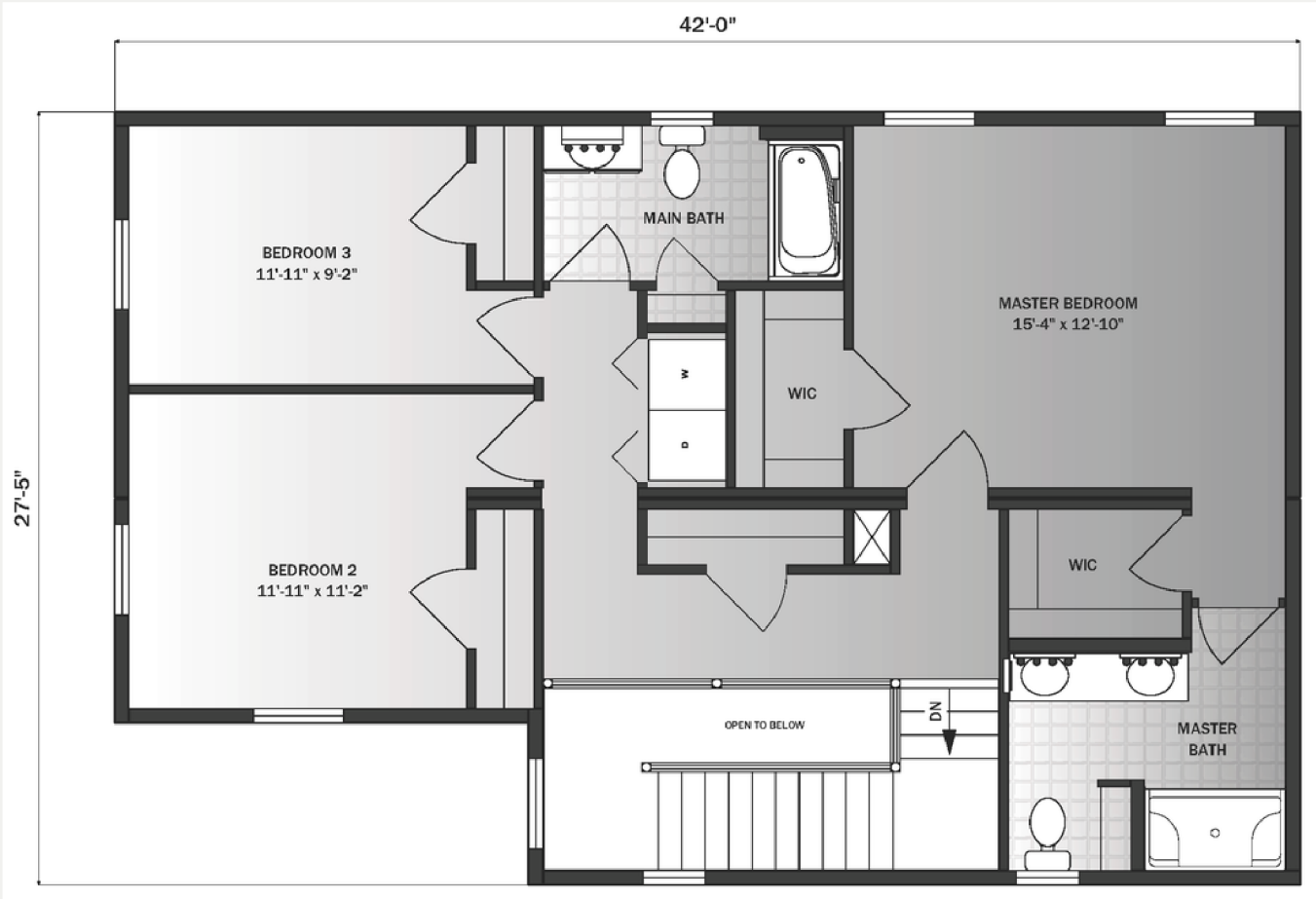
 (207) 572-3258

 sales@americanmodular.me

 www.americanmodular.me

 45 Portland Rd. Gray, ME 04039

Second Floor - 1,015 sq ft



First Floor - 1,015 sq ft

